

YAY FOR CHARDONNAY!

VITITEC, TRUSTED PRODUCERS OF HIGH-QUALITY CLONAL PLANT MATERIAL IN SOUTH AFRICA, OFFERS AN EXTENSIVE ARRAY OF CLONES FOR GRAPE PRODUCERS IN ORDER TO MAXIMISE PRODUCTION LEVELS AND OFFER A WIDE RANGE OF FLAVOUR CHARACTERISTICS.

Chardonnay (with total planting of 6 685 ha) is the fourth most planted white grape in South Africa after Chenin Blanc (17 102 ha), Colombard (10 601 ha) and Sauvignon Blanc (9 653 ha).

Production on average is between 2 and 5 kg/vine with medium vigour and well adapted to both warm and cool climate regions. Chardonnay ripens early, from the end of January to the first half of February. It has low yield potential with small bunches (150 - 200 grams) and small berries.

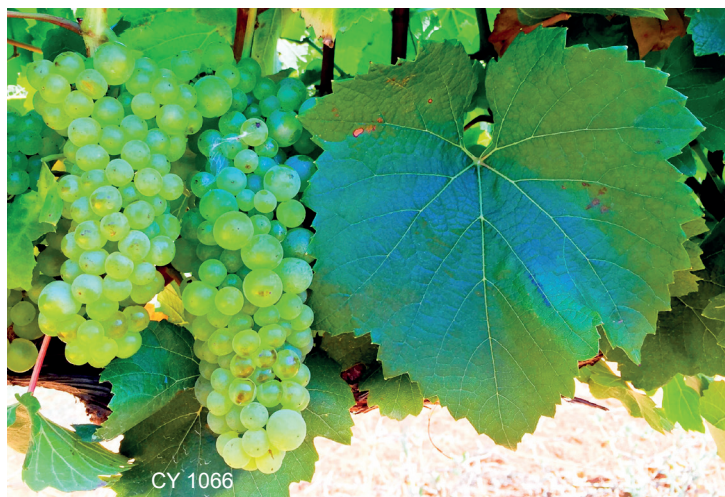
Vititec has an extensive list of clones available with a wide range of production levels and flavour characteristics. Phenotypic variation within grape cultivars arises from an accumulation of mutations from serial vegetative propagation.

Chardonnay is most probably a cross between Pinot Noir and Gouais Blanc. Since its appearance centuries ago in European vineyards, Chardonnay has spread throughout the world and made its first appearance in South Africa in the experimental vineyard at the University of Stellenbosch during the 1920s.

For various reasons it was only during the 1970s that interest in Chardonnay began to develop. The availability of good quality planting material were a problem till the late 1970s and when the first clones from France such as CY 55 and CY 268 were imported. This was followed by clones such as CY 9, CY 95, CY 96, CY 270, CY 277 and CY 548 during the 1980s. The latest clones of Chardonnay such as CY 1066, CY 1067 and CY 1068 were imported since 2008, under a new official agreement with ENTAV-INRA from France.

CHARDONNAY CLONE SUMMARY

Clones	Production	Wine
Classic Clones		
8, 76	Average	Aromatic, balanced, and typical good base wine
3, 5, 95	Average	Fine, full-bodied wines, balanced, typical, good base wine
Alternative Clones		
96	Above Average	Crisp wines, suitable for still and sparkling wines
277	Average to Above	Balanced, mineral aromas, suitable for still/sparkling wines
Qualitative Clones		
9, 548	Low	Distinctive, balanced and complex wines
1067	Low	Concentrated and complex wines
1066	Very low	Refined, distinctive, aromatic and well-balanced wines
Sparkling Wine Clones		
55, 78, 121, 131	High	Suitable for sparkling wines



CLONES AVAILABLE:

CY 3 and CY 5	Origin: California Production: Average production and growth Wine: Good quality wine with citrus character
CY 8	Origin: Italy Production: Average production and growth Wine: Excellent wine quality
CY 9, CY 548	Origin: France Production: Below average production with smaller bunches Wine: Good quality wine, very aromatic character
CY 55	Origin: Switzerland Production: Above average production, big bunches Wine: White or sparkling wine, citrus character
CY 76, CY 95	Origin: France Production: Average production and growth Wine: Good wine quality, aromatic and typical of cultivar
CY 96	Origin: France Production: Average to above average production Wine: Good wine quality for still and sparkling
CY 133	Origin: France Production: Average Wine: Tropical & Citrus
CY 270, CY 277	Origin: France Production: Above average production Wine: White or sparkling wine, citrus/tropical character
ENTAV-INRA® 1066	Origin: France Production: Very low Wine: Aromatic, well-structured wines

CHARDONNAY PRODUCTION (T/HA)

